



孕龍科技股份有限公司
Zeroplus Technology Co., Ltd.

SPECIFICATION

MODEL: DSA 使用說明書

PART NO : 031

VERSION : V1.03

Approver		Check	Design
GM	PM		

Customer Confirm

* Please fax the file to
Zeroplus Technology after
signing .

2F, NO.123, Jian Ba Rd,
Chung Ho City, Taipei Hsian, R.O.C.

Tel:+886-2-66202225
Fax:+886-2-22234362



目錄

1	軟體安裝	3
2	人機介面	7
3	使用說明	9



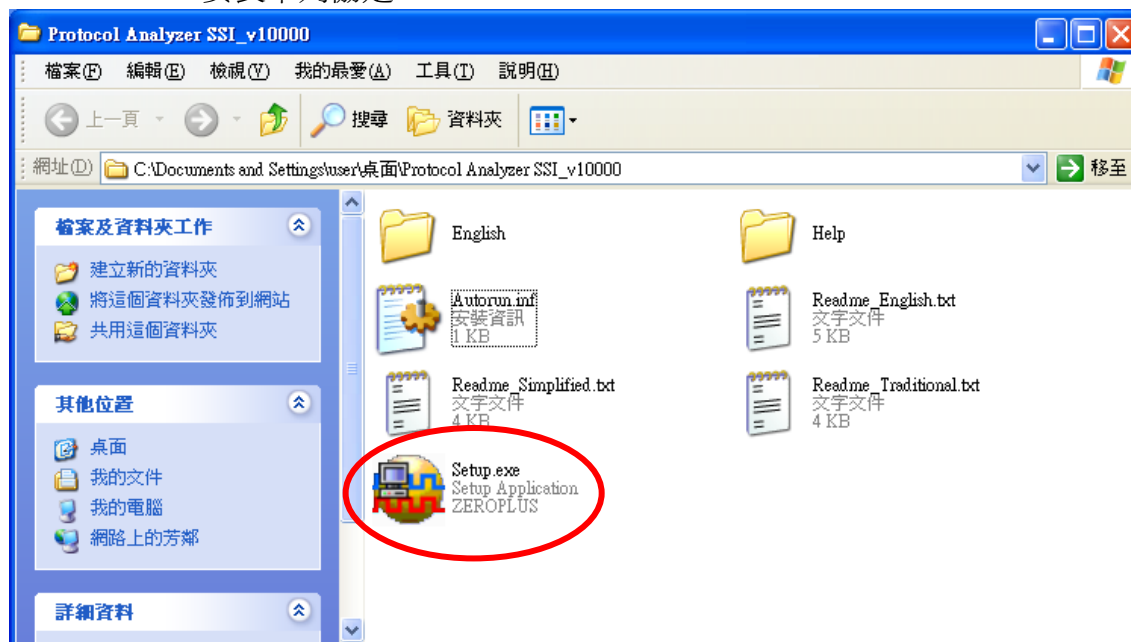
1 軟體安裝

安裝軟體請依照下列步驟安裝。

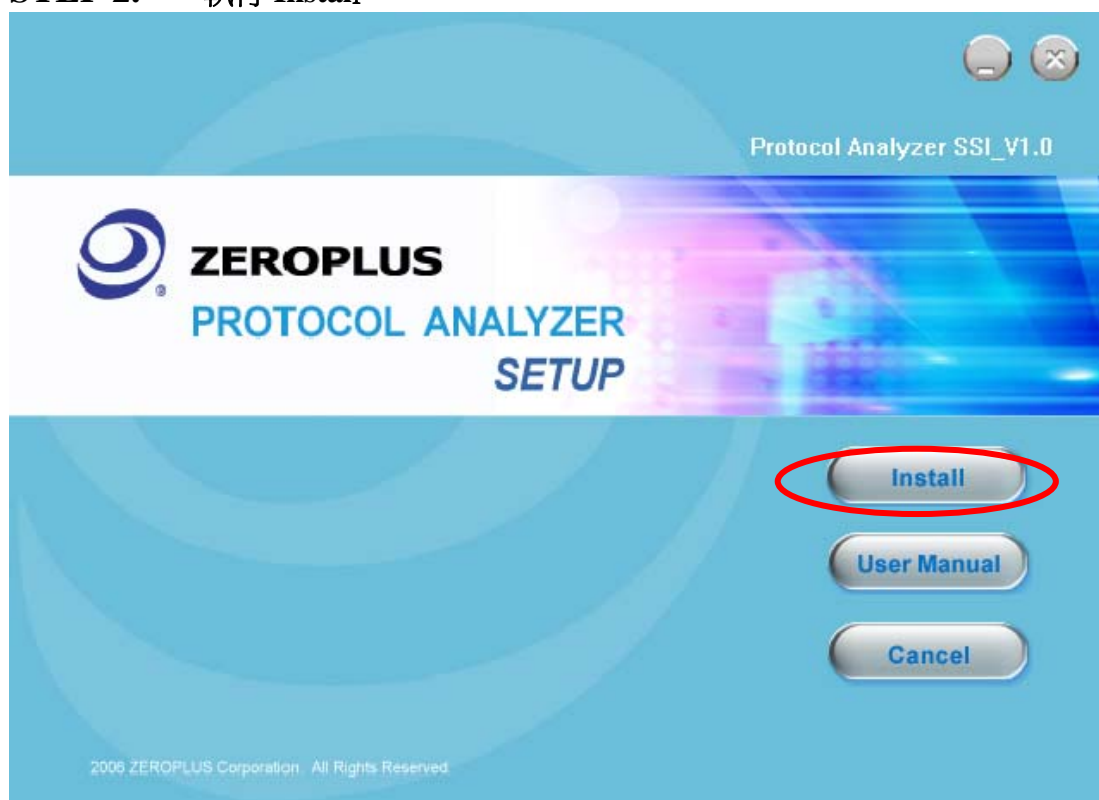
※注 1：所有串列協定安裝程式皆相同，安裝時依照程式即可，下圖安裝以串列協定 SSI 為範例，藉以參考。

※注 2：本說明書若有任何改動恕不另行通知。因模組版本升級而造成的與本說明書不符，以串列協定軟體為準。

STEP 1. 安裝串列協定。

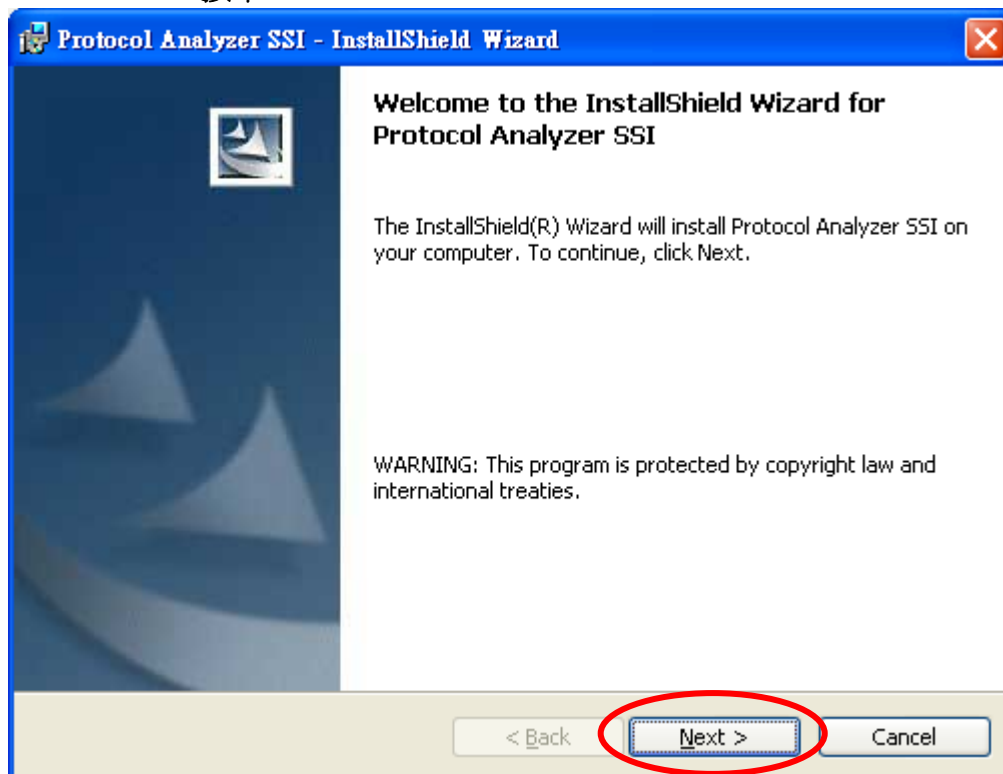


STEP 2. 執行 Install。

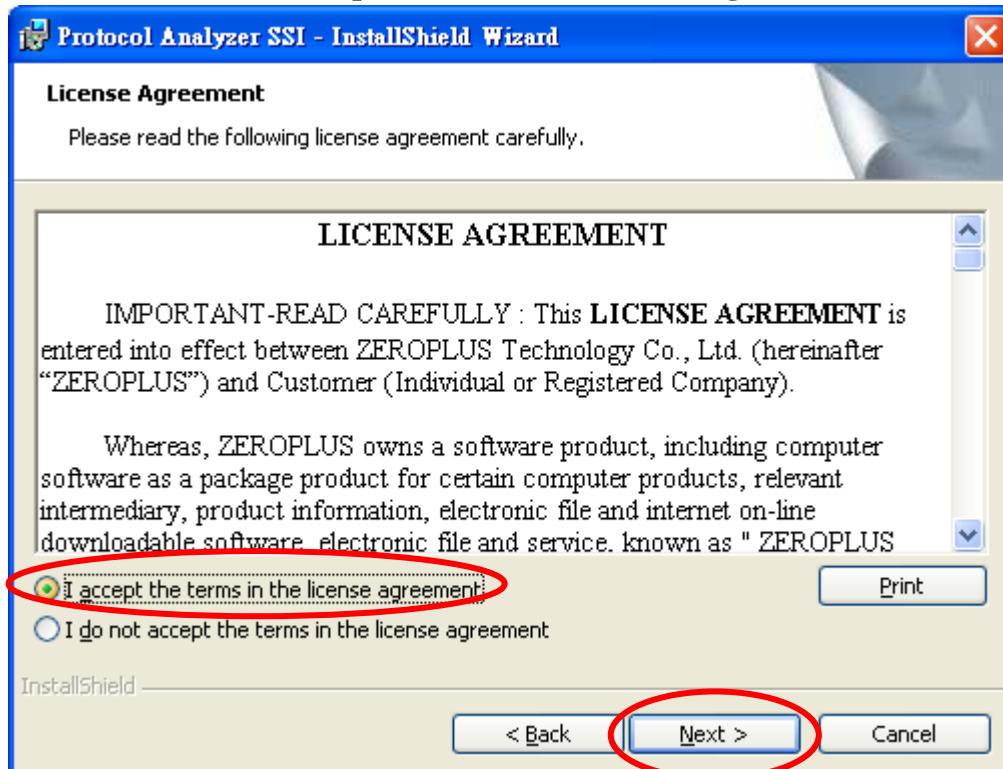




STEP 3. 按下 Next。



STEP 4. 點選 I accept the terms in the license agreement，並按下 Next。





STEP 5. 填寫完相關資料，點選 Next。

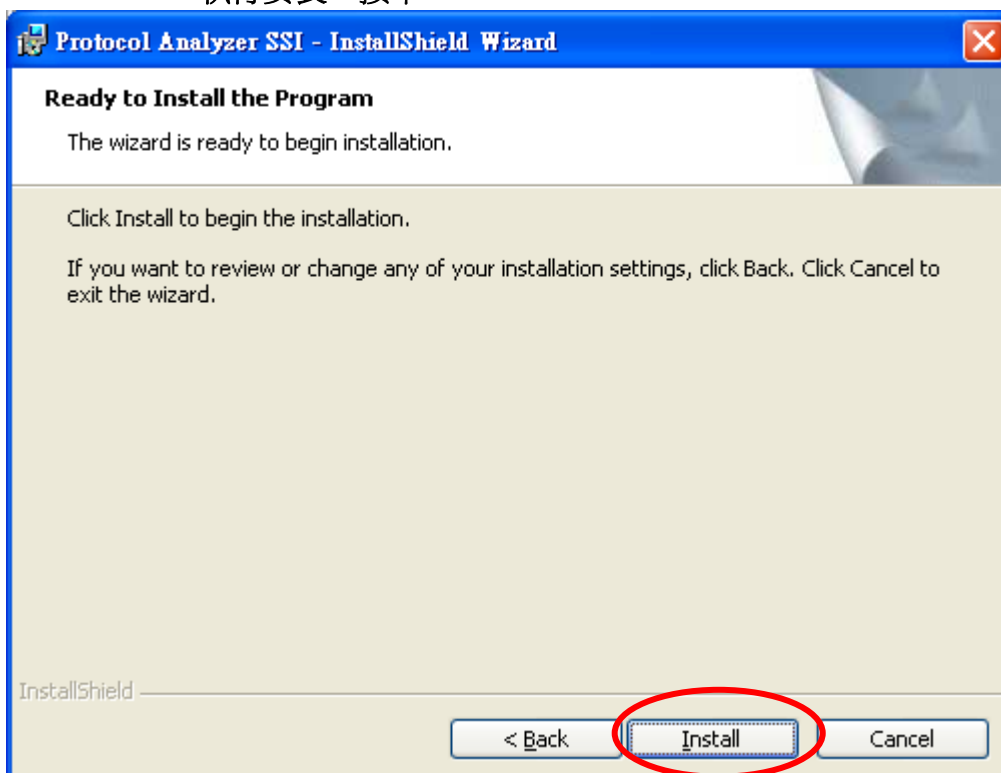
The screenshot shows the 'Customer Information' screen of the 'Protocol Analyzer SSI - InstallShield Wizard'. The title bar is blue with the text 'Protocol Analyzer SSI - InstallShield Wizard' and a close button. The main area has a light beige background. At the top, it says 'Customer Information' and 'Please enter your information.' Below this, there are two text input fields: 'User Name:' with 'USER' entered, and 'Organization:' with 'LOGIC' entered. Further down, it says 'Install this application for:' followed by two radio button options: 'Anyone who uses this computer (all users)' (which is selected) and 'Only for me (TIGER-XP)'. At the bottom, there is a progress bar labeled 'InstallShield' and three buttons: '< Back', 'Next >' (which is circled in red), and 'Cancel'.

STEP 6. 點選 NEXT。

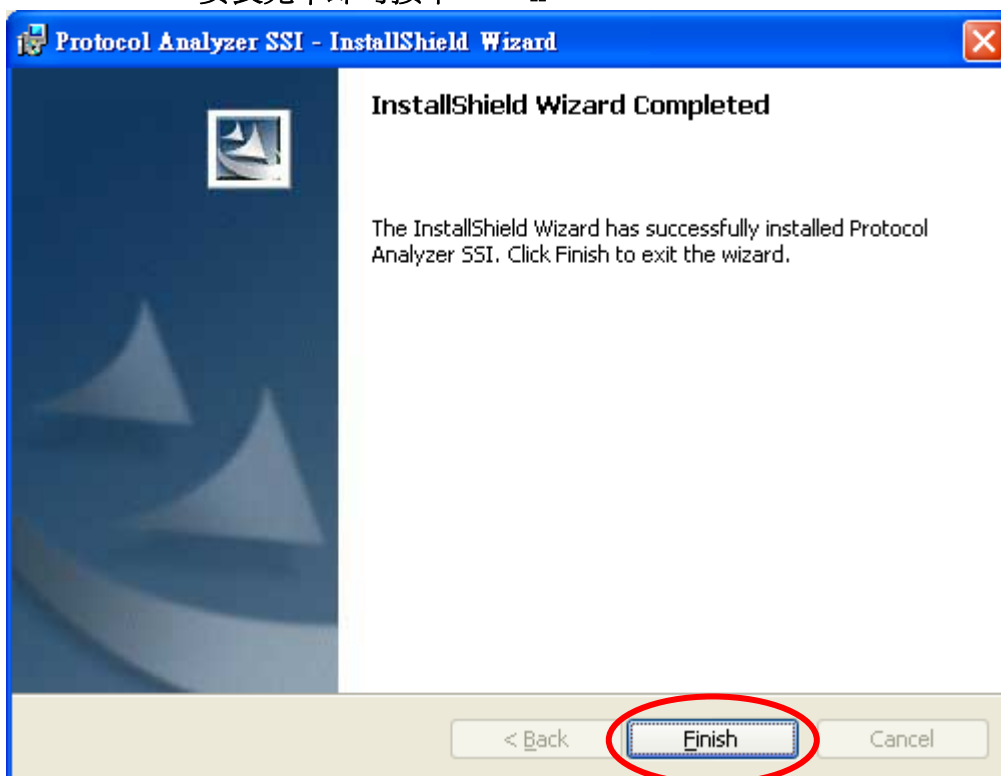
The screenshot shows the 'Setup Type' screen of the 'Protocol Analyzer SSI - InstallShield Wizard'. The title bar is blue with the text 'Protocol Analyzer SSI - InstallShield Wizard' and a close button. The main area has a light beige background. At the top, it says 'Setup Type' and 'Choose the setup type that best suits your needs.' Below this, it says 'Please select a setup type.' There are two radio button options: 'Complete' (which is selected) and 'Custom'. Each option has a small icon of a computer tower and a description. The 'Complete' option says 'All program features will be installed. (Requires the most disk space.)' and the 'Custom' option says 'Choose which program features you want installed and where they will be installed. Recommended for advanced users.' At the bottom, there is a progress bar labeled 'InstallShield' and three buttons: '< Back', 'Next >' (which is circled in red), and 'Cancel'.



STEP 7. 執行安裝，按下 **Install**。



STEP 8. 安裝完畢即可按下 **Finish**。





2 人機介面

在設定頁，DSA 相關設定可參考下圖。

DSA 設定頁



通道設定：

1. DATA 資料訊號線，預設值為 A0。
STB 同步訊號線，預設值為 A1。
2. ACK 傳輸確認線，預設值為 A2。

串列協定顏色：設定串列協定封包顏色。



DSA 封包顏色: 封包部分可依使用者選擇相關顏色進行調整。



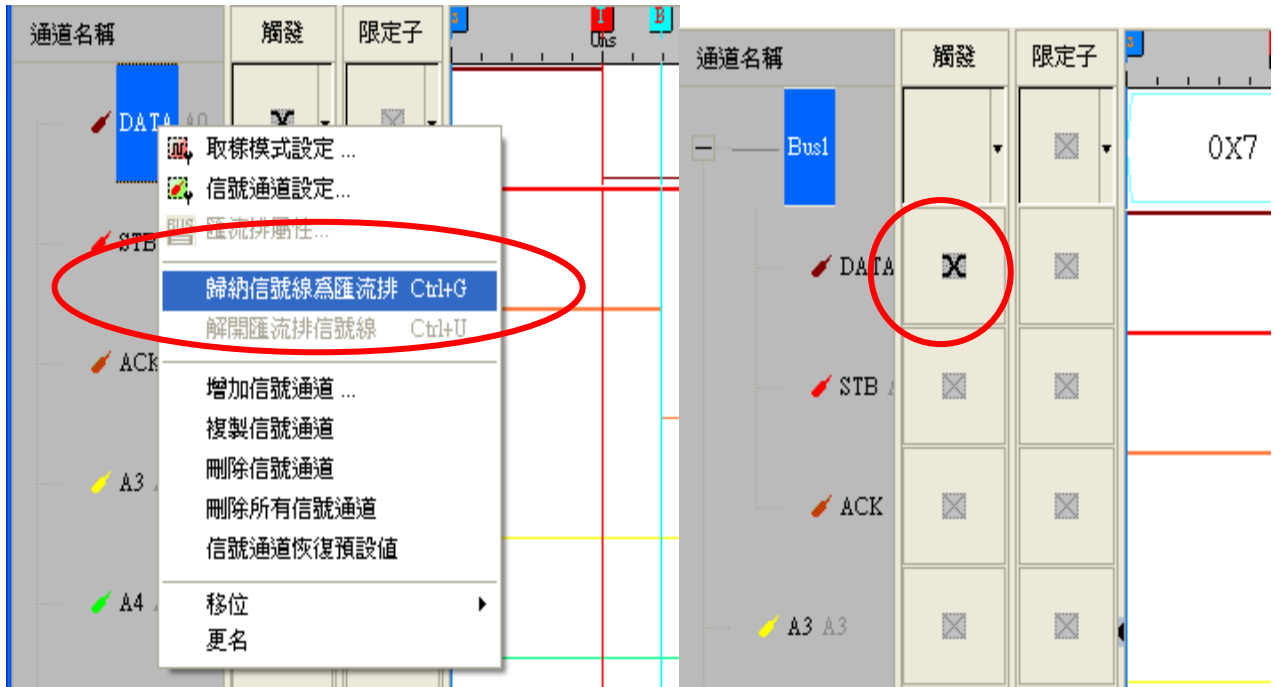
DSA 註冊頁: 註冊部分提供公司明細，使用者如有相關問題可撥打電話或上網查詢相關資訊。



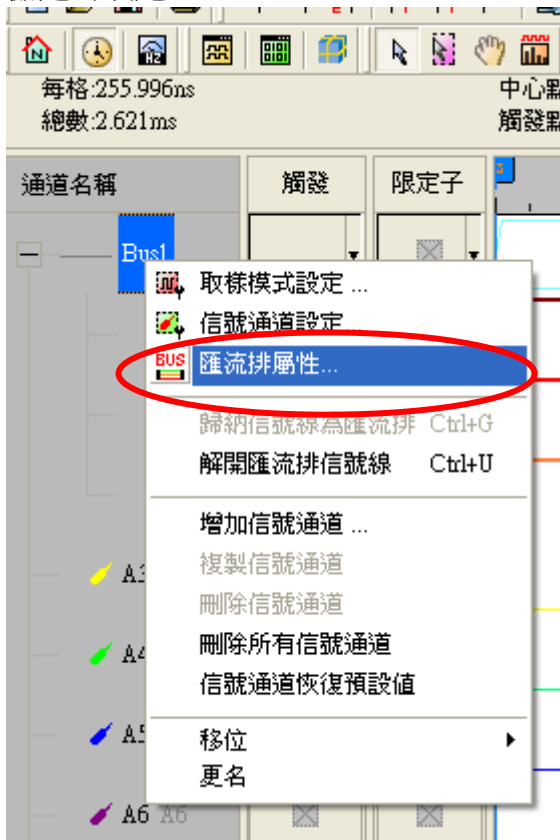


3 使用說明

STEP 1. 首先要把分析的通道設定成普通匯流排。

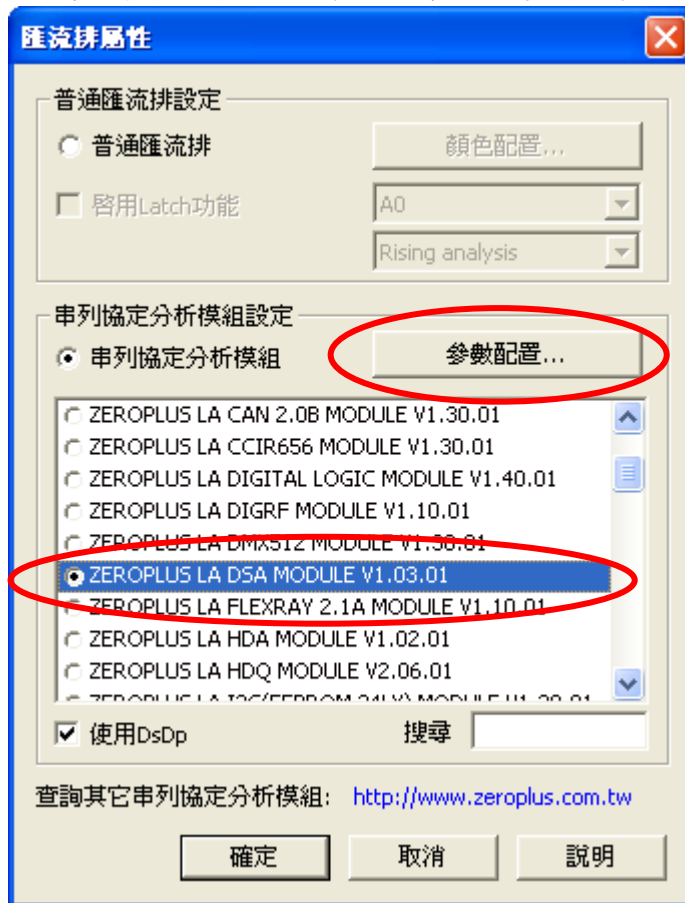


STEP 2. 在匯流排通道按右鍵按選擇匯流排屬性或在工具列上按匯流排屬性，可進行串列協定的設定。

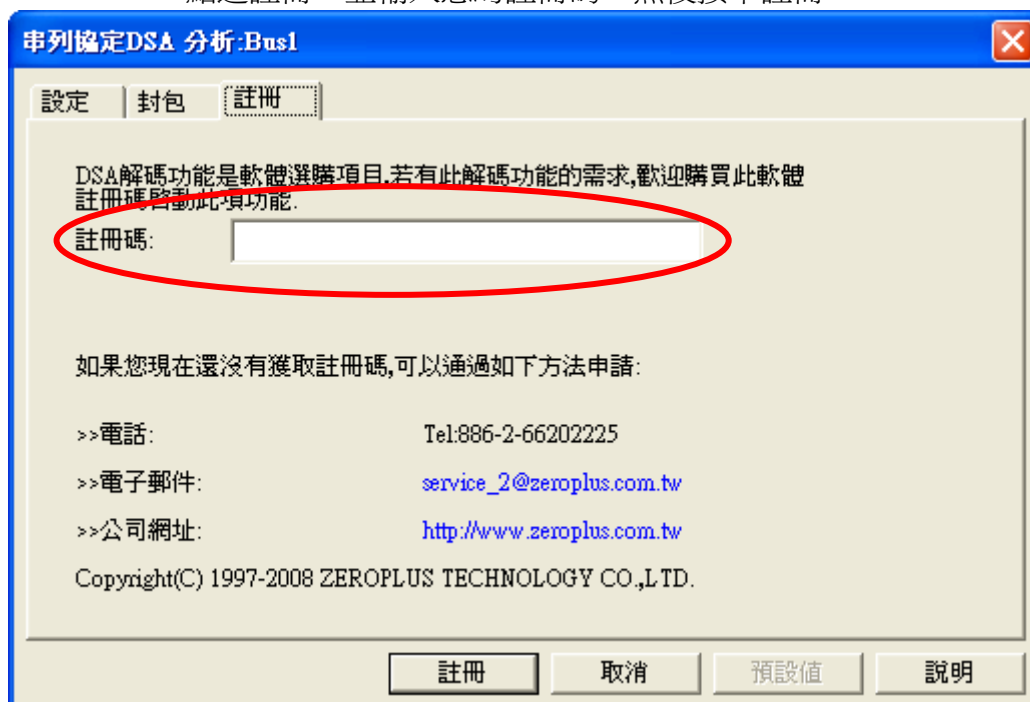




STEP 3. 串列協定設定，選擇 DSA 後點選參數配置。



STEP 4. 點選註冊，並輸入您的註冊碼，然後按下註冊。





STEP 5. 打開設定頁，選擇相對應 DSA 訊號線。

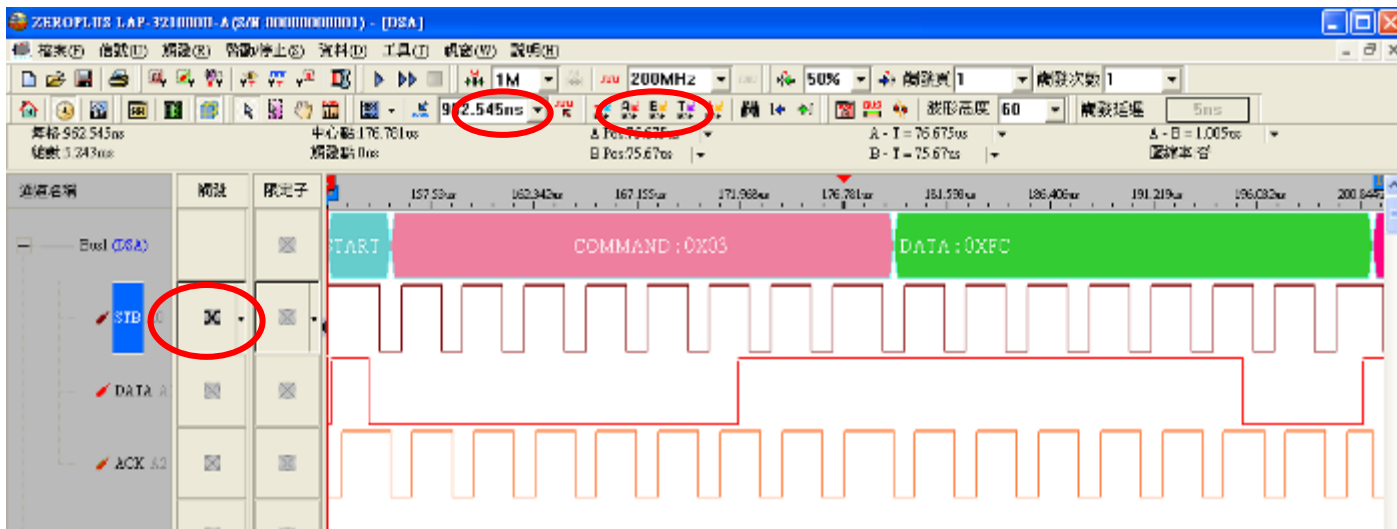


STEP 6. 設定串列協定封包顏色。





STEP 7. 串列協定解碼圖示，設定條件為任一變化緣，記憶深度為 1M，取樣頻率為 200MHZ。



下圖為封包列表及波形展示圖

